

FOR SALE - 54,245 SF OF LAND

2001 Irving Blvd (Express St.)/9025 Manufacturing St.
Dallas, TX 75207



LOCATION DATA

COUNTY: Dallas
MARKET: South Stemmons
SUBMARKET: Design District

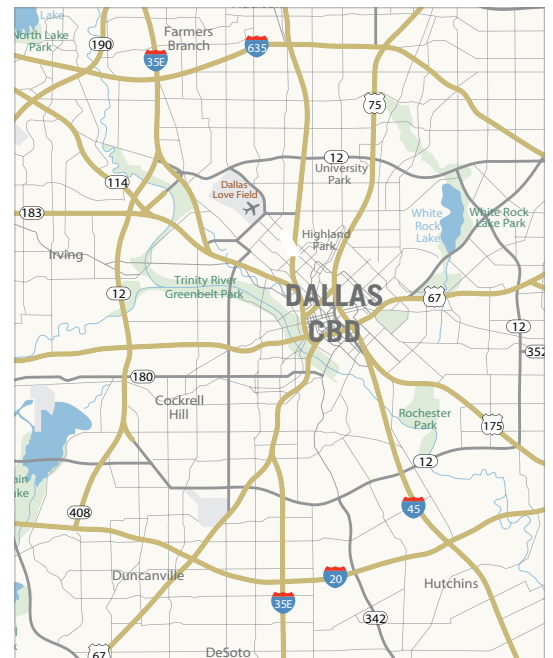
SITE DATA

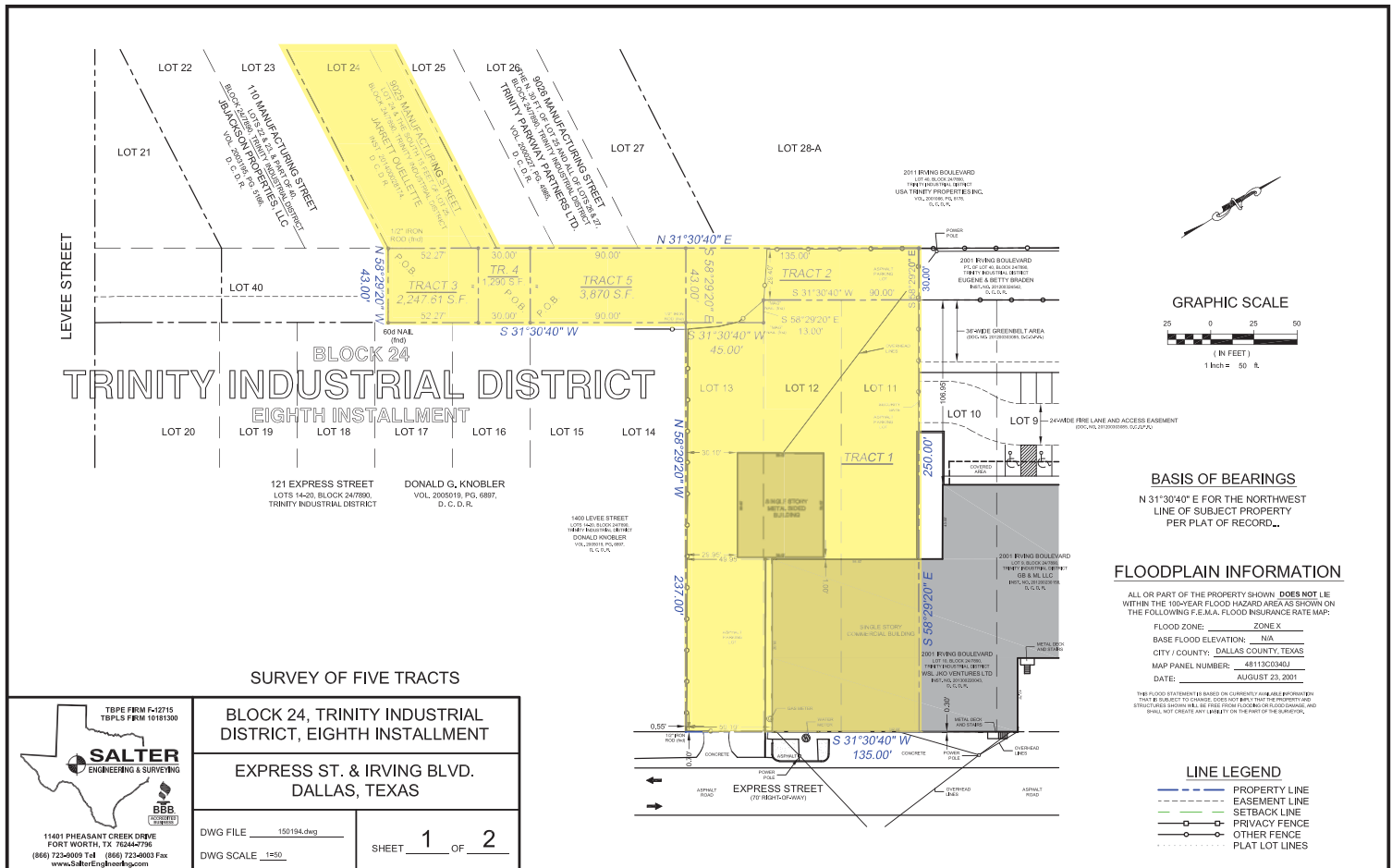
LAND AREA: 54,245 SF
METAL BUILDING: 3,000 SF
TILT WALL BUILDING: 8,500 SF
COMMENTS: Downtown views
Industrial Research zoning
Great redevelopment opportunity:

- Public storage
- Multifamily
- Mid-rise office

ECONOMIC DATA

ASKING PRICE: \$3,797,150.00





TPPE FIRM F-12715
TBPLS FIRM 10181300

SALTER
ENGINEERING & SURVEYING

11401 PHEASANT CREEK DRIVE
FORT WORTH, TX 76148-7106
(866) 723-9009 Tel (866) 723-9003 Fax
www.SalterEngineering.com

BLOCK 24, TRINITY INDUSTRIAL DISTRICT, EIGHTH INSTALLMENT

EXPRESS ST. & IRVING BLVD. DALLAS, TEXAS

DWG FILE: 150194.dwg
DWG SCALE: 1"=50'

SHEET **1** OF **2**

