

FOR SALE > 17.272 ACRES LAND

BROOKHOLLOW/ LOVE FIELD

DALLAS, TX

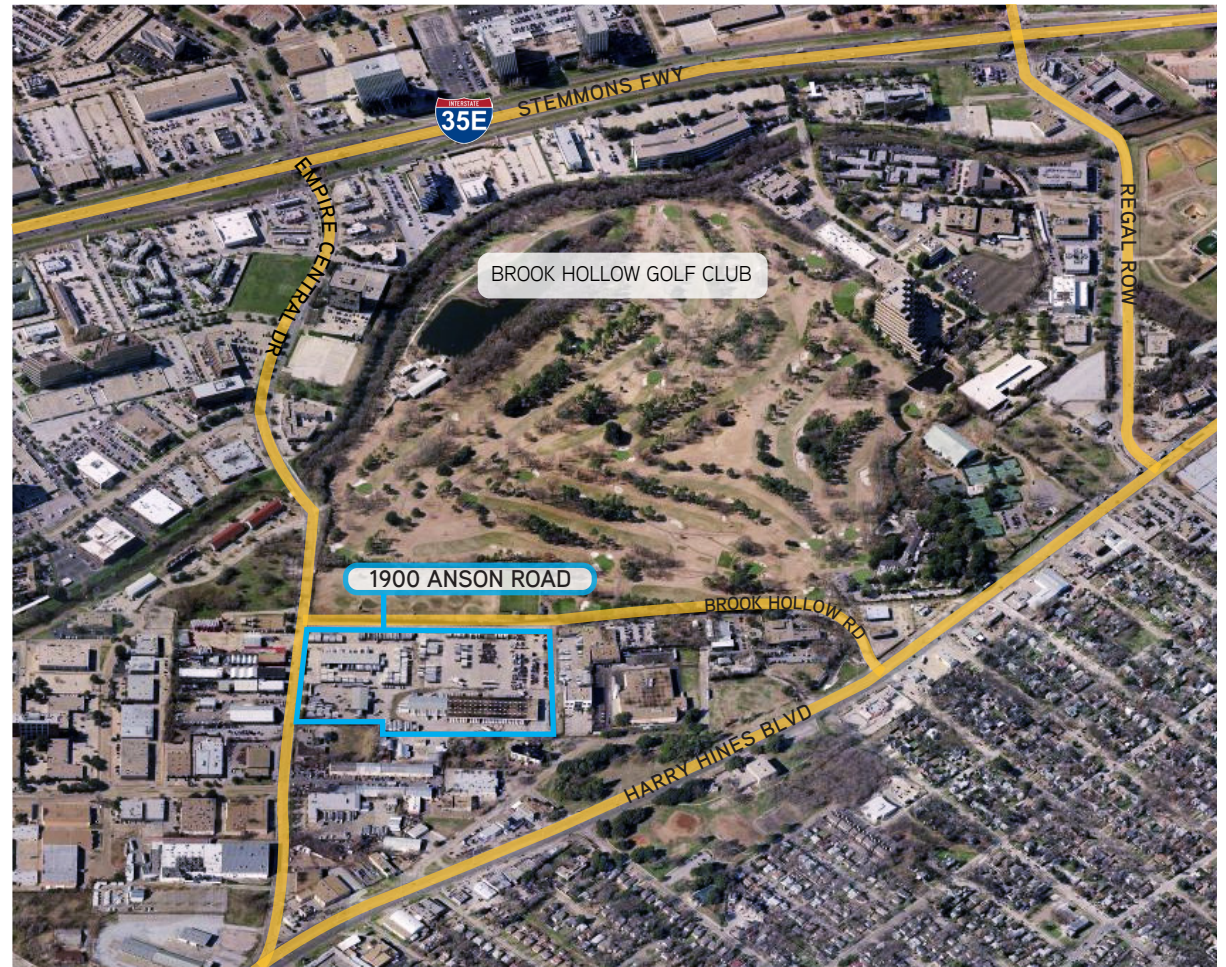
PROPERTY HIGHLIGHTS

- Currently occupied by 3 Tenants, Lease information available upon request
- 17.272 Acres Industrial Research District
- Land boundaries are Empire Central, Anson Rd. and Brookhollow Rd.
- Leases expire in the August/September 2023 timeframe

Three buildings currently on the site:

1. Truck terminal - 47,040 SF dock/9,400 SF office
2. Truck terminal - 15,840 SF dock/1,380 SF office
3. Maintenance Shop - 9,891 SF 12 doors/6 bays

REDEVELOPMENT IN BROOKHOLLOW/LOVE FIELD



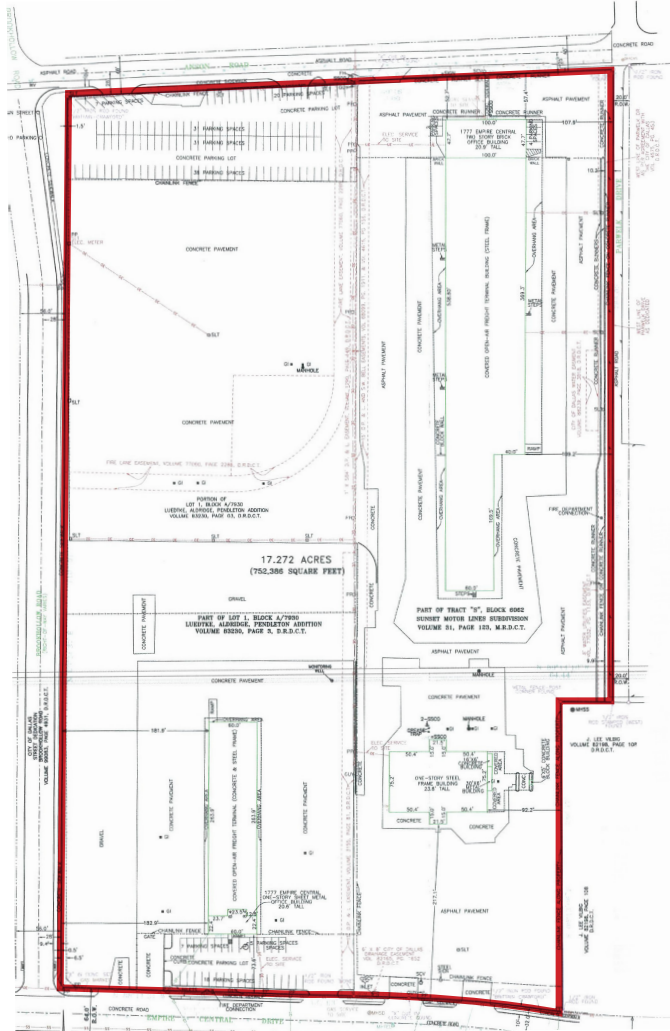
PROPERTY OVERVIEW

Representing a Love Field land redevelopment opportunity in the desirable East Brookhollow submarket. The address is 1900 Anson Rd & 1789 Empire Central. Neighboring one of Dallas' most exclusive private clubs, Brook Hollow Golf Club, this 17.272 acre site, improved with 3 buildings currently being used as truck terminals by two freight companies. Strategically located in close proximity to Dallas Love Field Airport and only minutes from Southwestern Medical District and Parkland Hospital, this site lies in an area with great opportunity.

FOR SALE > 17.272 ACRES LAND

BROOKHOLLOW/LOVE FIELD

DALLAS, TX



FOR SALE > 17.272 ACRES LAND

LOCATION

DALLAS, TX

